

Decisions Matter: The Four Question Spacetime Bio-model

Author: Lachlan Madden

Affiliation: No affiliation

E-mail: Lachlan.Madden1994@gmail.com

Orcid id: 0009-0000-8625-691X

Abstract

This paper aims to describe the generations of particles and waves and describes the type of decisions they represent. This paper suggests that communication, decisions, certainty, and their variants are fundamental, and that universe as a whole is communicating the non-contradiction contradiction, or the contradictory non-contradiction, that which one cannot truly know, which is false. This paper introduces an equation for gravity and tries to explain what the result of a quantum gravitational system is. This paper uses physics to explain biology and uses biology to explain physics. This paper introduces a bio-space-time model representing the brains ability states, where space is recognition, time is perception, and spacetime is sense, and all together is communication. This paper was written under the implication that anything that describes everything is false.

Methods

To model the types of communication, the method that was chosen was that there exists a fundamental hierarchy of communication. The hierarchy was chosen based on the assumption that there exists an anti-brain, and that the brain represents that hierarchy. Therefore, it was assumed that there is an objective and subjective reality, for which both sit underneath the hemispheres, for which various general areas stem from both subjective and objective reality areas. To model the general areas of communication, a generalised approach was taken when modelling said areas, where when looking at the universe in a generalised way, one can reduce say for example chemicals, into a general area of chemical communication. Once a general area of communication has been identified, the rule of six was introduced, which states that for every general area, there are six primary areas of communication that stem from the general area. Once a primary area has been identified, it stems into two secondary areas, and into four tertiary areas.

Results

Table 1. Generations of left hemisphere

Generation	Generation absolute zero	Generation positive zero	Generation one
Left hemisphere	Between non-quantum and beyond anti-quantum	Absolute fluid quantum	Fluid quantum
Generation	Generation two	Generation three	Generation four
Left hemisphere	Absolute quantum	Quantum	Quantum yet mis-quantum
Generation	Generation five	Generation six	Generation seven
Left hemisphere	Mis-quantum	Absolute mis-quantum	Non-quantum
Generation	Generation eight	Generation absolute eight	
Left hemisphere	Absolute non-quantum	Non-quantum yet fluidly quantum	

Table 2. Generations of right hemisphere

Generation	Generation absolute zero	Generation positive zero	Generation one
Right hemisphere	Between anti-non-quantum and non-quantum	Absolute non-quantum	Non-quantum
Generation	Generation two	Generation three	Generation four
Right hemisphere	Absolute mis-quantum	Mis-quantum	Mis-quantum yet quantum
Generation	Generation five	Generation six	Generation seven
Right hemisphere	Quantum	Absolute quantum	Fluid quantum
Generation	Generation eight	Generation absolute eight	
Right hemisphere	Absolute fluid quantum	Non-quantum yet fluidly quantum	

Table 3. Certainty of right lateralization

Generation	Absolute zero	Positive zero	One
Certainty	Certain fluid anti-certain yet certain non-certainty	Certain non-certainty	Uncertain non-certainty
Generation	Two	Three	Four
Certainty	Certain mis-certainty	Uncertain mis-certainty	Certainly uncertain bi-certainty
Generation	Five	Six	Seven
Certainty	Uncertain certainty	Certainly certain	Uncertain fluid certainty
Generation	Eight	Absolute eight	
Certainty	Certain fluid certainty	Certain non-certainty yet certain fluid certainty	

Table 4. Generations of right hemisphere position communication

Generation	Absolute zero	Positive zero	One
Type of position	Certain non-certainty yet anti-certain fluid certainty it's fluid anti-positionless non-position – Hyper-non-position	Certain non-certainty it's positionless	Uncertain non-certainty it's positionless
Generation	Two	Three	Four
Type of position	Certain mis-certainty of misposition	Uncertain mis-certainty of misposition	Certainly uncertain bi-certainty it's either misposition or position and you can't decide which, so you make an undecided decision it's both, un-positioned
Generation	Five	Six	Absolute six
Type of position	Uncertain certainty of position	Certain certainty of its position	Uncertain certainty it's fluid position
Generation	Eight	Absolute eight	
Type of position particles	Fluid certain certainty it's fluid position	Between certain non-certainty and fluid certainty that it's positionless position – hyper-certain of hyper-position	

Table 5. Generation of right lateralized decision

Generation	Absolute zero	Positive zero	One
Type of right hemisphere decision	Absolute anti-non-decision non-decision– a hyper-non-decision	Absolute non-decision	Non-decision
Generation	Two	Three	Four
Type of right hemisphere decision	Absolute mis-decision	Mis-decision	Undecided decision
Generation	Five	Six	Seven
Type of right hemisphere decision	Decision	Absolute decision	Fluid decision
Generation	Eight	Absolute eight	
Type of right hemisphere decision	Absolute fluid decision	Absolute non-decision fluid decision – a hyper-decision	

Table 6. The values of right lateralization

Generation	Generation zero	Generation positive zero	Generation one
Value	Between a non-value and an anti-non-value (fluid value) – absolute fluid non-value – hyper-non-value - fluidly undefined value	Certain non-certainty of absolute non-value – no possible value – Absolute non-quantum	Uncertain non-certainty of non-value – no possible value – Non-quantum
Generation	Generation two	Generation three	Generation four
Value	Certain mis certainty of negative value – Absolute mis-quantum	Uncertain mis-certainty of negative value – Mis-quantum	Certainly uncertain bi-certainty of un-value.- Can't decide that it's either negative or positive so it's both, a zero – un-quantum
Generation	Generation five	Generation six	Generation seven
Value	Uncertain positive value - quantum	Certain positive value – absolute quantum	Fluid uncertain certainty of fluid value – fluidly quantum
Generation	Generation eight	Generation absolute eight	
Value	Fluid certain certainty of fluid value – absolute fluidly quantum	Non-certain fluid certainty of non-valued fluid value – Hyper-fluid-value -undefined fluid value	

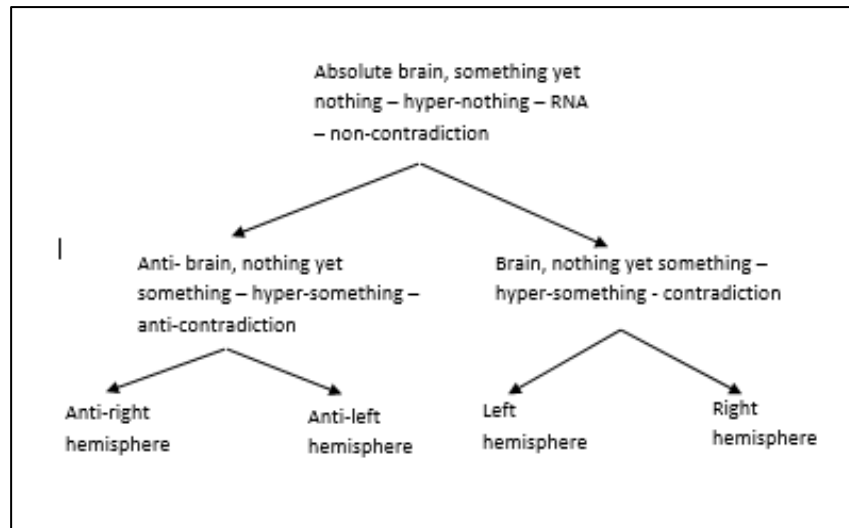


Figure 2. Top layer of brain hierarchy communication

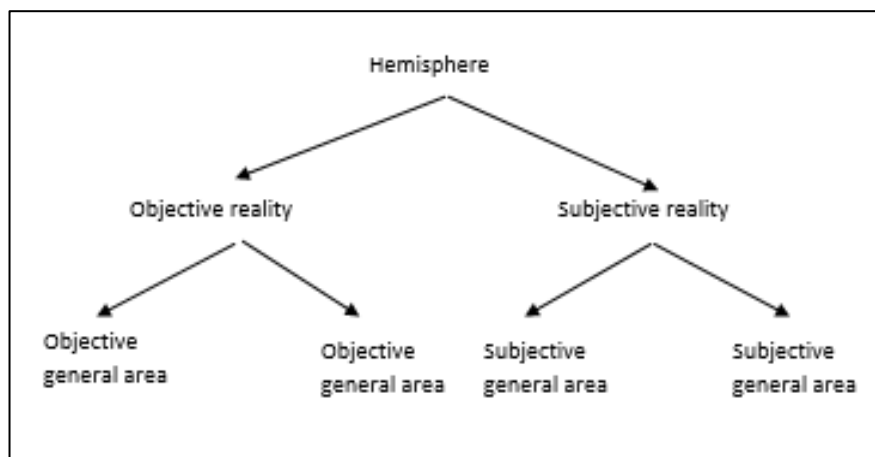


Figure 3. Sub areas of right hemisphere communication

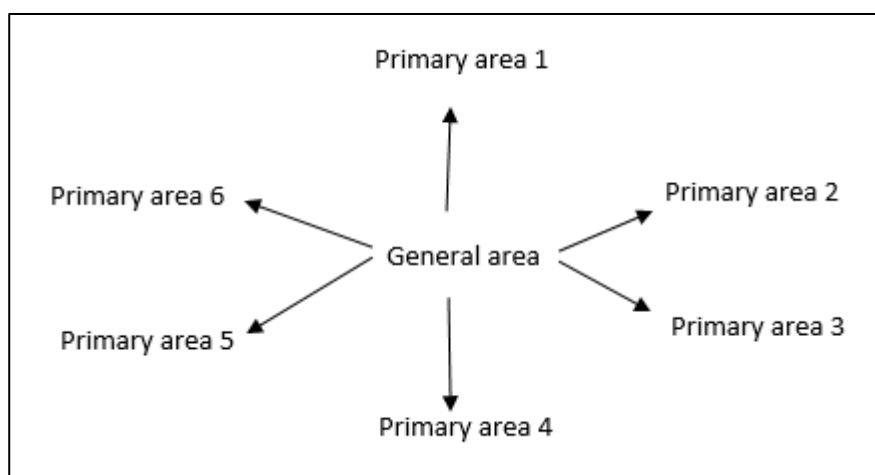


Figure 4. General area sub area communication

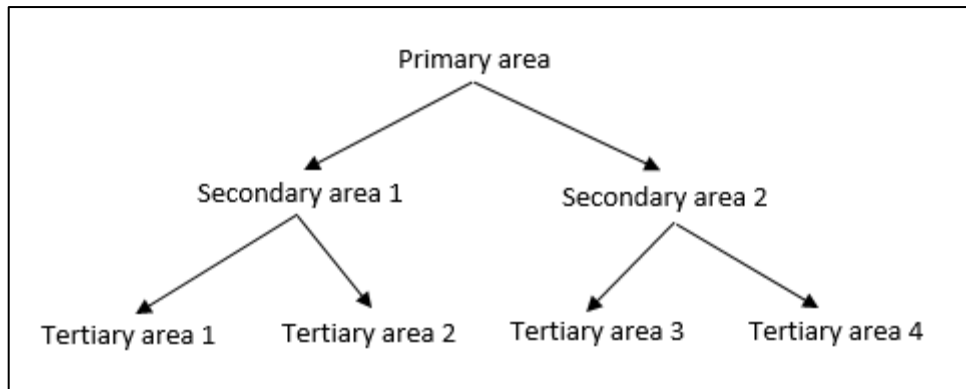


Figure 5. Primary area and sub area communication

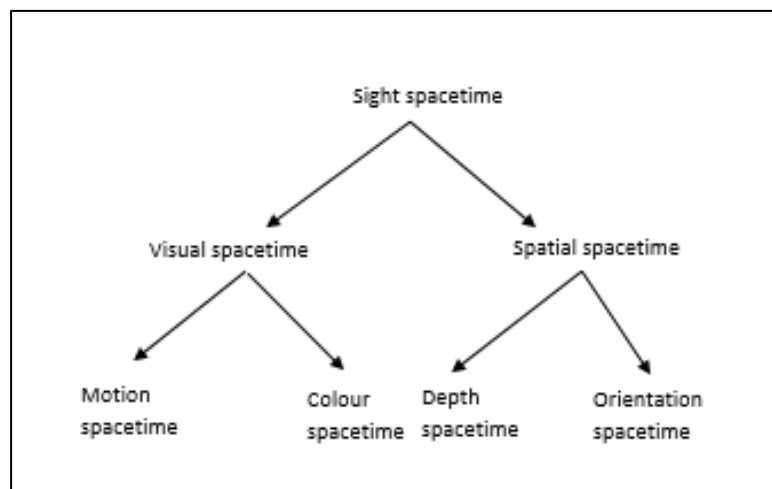


Figure 6. Sight spacetime and sub areas

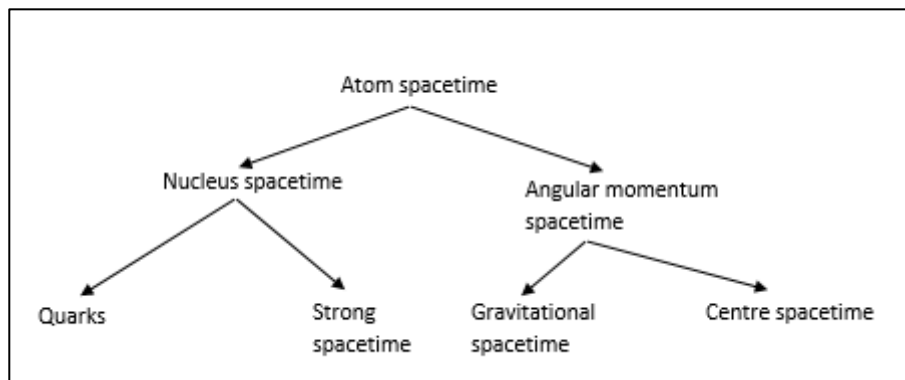


Figure 7. Atomic spacetime and sub areas

Discussion

For every type of communication time and information space in this universe there exists three questions. That being the what, the where, and the when. For example, which communication, the communication of gravity having three questions. The where (in space) may possibly be circumference, the when (in time) possibly being the radius, and the what (in spacetime) being the acceleration, creating an equation, where:

$$\text{Gravitational communication} = (\text{Sense} = \frac{\text{Recognition}}{\text{Perception}})$$

$$g \text{ acceleration} = \frac{\text{Circumference}}{\text{Radius (of the inner core)}}$$

So, therefore, when working out earth's gravity:

$$g = \frac{40075\text{km}}{1220\text{km}}$$

$$g = 32.8483\text{km}$$

$$g = 9.1245\text{m}$$

Admittedly, there is some discrepancy comparing this answer to the accepted gravity of earth's surface of 9.80665m/s^2 .

So, what would be the radius of the core if earths gravity is equal to 9.80665m/s^2 ?

$$\text{Radius} = \frac{40,075\text{km}}{9.80665\text{m/s}^2 \times 3.6}$$

$$\text{Radius} = \frac{40075\text{km}}{35.30394\text{km}}$$

$$\text{Radius of earths inner core} = 1135.1424\text{km}$$

Therefore does the earths inner core have an estimated 1135km radius? If the earths core is equal to 1135km, then this can be used in the equation to estimate the gravitational acceleration, where:

$$g = \frac{40,075\text{km}}{1135.1424\text{km}}$$

$$g = 35.30394\text{km/s}^2$$

Where converted into meters per second squared:

$$g = 9.80665\text{m/s}^2$$

Therefore, given each question of communication, the how, has three sub-questions, the where in space, the when in time, and the what In spacetime, where the equation of the where and when equalling the what, with all three decisions equalling the how (it gets communicated). Therefore given mis-communication, as mis-quantum is negatively quantum, gravitational mis-acceleration has a value, however the true value is not what it seems. So therefore, the question to ask is what is mis-acceleration? Perhaps it is deceleration. Therefore it is suggested that a mis-quantum gravitational system decelerates, instead of accelerating. The next question to ask would be what is a mis-circumference, the

opposite of circumference, and where is the mis-radius, the opposite of a radius. The final equation of course may look like:

$$-g = \frac{\textit{Opposite of circumference}}{\textit{opposite of radius}}$$

Therefore, if a mis-decision (a negative value) is opposite to a decision (a positive value) a fluid decision (a changing value) is opposite to a non-decision (A non-value – undefined), and an undecided decision is its own opposite then it may be reasonable to assume that if earth was a mis-quantum system then it would have the gravitation deceleration of -9.80665m/s^2 . Given the four questions of the brain, there exists four questions for the strong force, the weak force, and electromagnetism. But of course electromagnetism is unique in this regard as electromagnetism combines two types of communication. Therefore there are fraction questions in regards to electromagnetism. For example, one half where (recognition) in space is electricity, one half where in space is magnetism. One half when (perception) is it electricity one half when is it magnetism, one half what (sense) is electricity one half what is magnetism, existing in fraction space and fraction time. This can also be applied to particles, for example where in space is It an electron, when in time is it an electron, what in spacetime is it an electron, equalling how (communication) it's an electron. What is an electron communicating? Considering electromagnetism is the combination of two communication areas, that being the communication and information of electricity and the communication and information of magnetism, this can be translated to the brain, with the mechanism that combines two (or possibly more?) areas of communication to create an altered form of communication being synaesthesia. Synaesthesia may be the Higgs mechanism, whereby the communication of mass gets combined with the communication of quarks, creating massive quark communication. It is not certain which communication quarks are. So therefore, given spin, which may be communicating orbits, gets combined with quarks that they create a three thirds communication of spinning massive quarks. And of course you can add another quarter communication of gravity, to combine spinning massive gravitating quarks, a four quarter synaesthetic communication existing in fraction spacetime. Therefore, it may be possible to combine the forces into a four-quarter unified force communication, but may not necessarily be necessary, just as a four-quarter communication of socially motivated unpleasant odour that brings crying laughter isn't necessary, or a four-quarter communication of visually acidic election rage isn't necessary. Possible, however producing something absurd, just as the combination of the four forces may produce. The four forces are not the only types of communication of the universe. Each brain area represents a type of communication. Everything is a paradox, which is false, so therefore everything isn't a paradox, which is false, so therefore everything both is and isn't a paradox, which is false. So therefore everything is neither a paradox and not a paradox, which is false, so therefore everything is all possible paradoxes, which is false, so therefore everything is the impossible paradox, which is false. The impossible paradox is a possible paradox. To know the true

beginning of the paradox is to know the false beginning, and to know the true end of the paradox is to know the false end, which, of course, is false. This can be applied to anything that describes everything. So therefore if it is said that everything is mass, then it is false, therefore it's not mass, which is false, so therefore it's both, which is false, so therefore it's neither, which is false, so therefore it's the state of all possible states, which is false, so therefore it is the impossible state, impossible mass, which is false. The impossible mass, the false every-mass, is a possible mass, which is false. So therefore if the prefix of every- is applied to anything than therefore it always leads to the same result, which is false. The false generation is a true generation, which is false. So therefore, the universe is everything, which is false, so therefore it's not everything, which is false, so therefore it's both, which is false, so therefore it's neither, which is false, so therefore it's all possible states, which is false, so therefore it's the impossible state, which is false. Does the false conclusion apply to a black hole? Considering entanglement, perhaps the false conclusion also applies, for example if it is a true spin up, then it is false spin down, and if it is a false spin up then it is a true spin down. What needs to be taken into account is the existence of both objective and subjective reality. So therefore there is both objective position and subjective position. A scenario where this plays out is an observer who walks to a closed door and asks an object inside the room if they are in the room. The observer has yet to check, however the object responds with "Yes, I am in the room" The observer interprets that as being in the room on the chair, so therefore that is the interpretation of the objects objective position but does not realise that is the objects subjective position, so when the observer opens the door to the room and sees that the object isn't there in the positively valued room on the chair. The observer has yet to check the negatively valued room, under the bed, where the objects true objective position is.

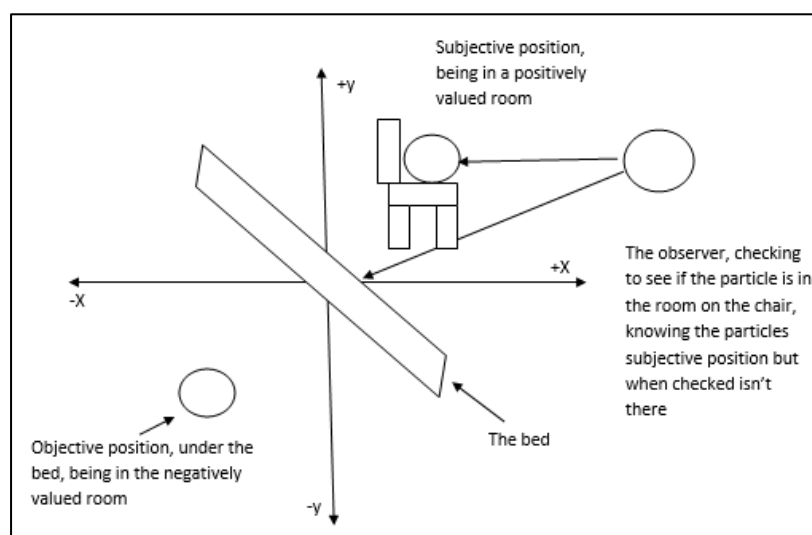


Figure 8. Under the Bed

The observer then thinks where in the room is the object. "Is the object under the bed?" the observer asks themselves, however the observer is uncertain about this, therefore the

object from the observer's reference frame is a generation three uncertainly mis-certain objective object position. The observer then looks under the bed, and the uncertainly mis-certain position of the generation three object becomes a generation six certainly certain objective object position. The reason the generations where chosen is that for example sexuality, comes in many forms. For example a-sexual (non-quantum, sexuality that has no possible value), homosexual (mis-quantum, a negative value), bisexual (mis-quantum yet quantum, zero value), straight (quantum, a positive value), and fluid sexuality (a changing value). Therefore the assumption that for every area of communication there exist the certain generations and the uncertain generations.

There is an argument to be made that chemicals represent mathematics. Perhaps there is a mathematical model for each general area, say for instant sight communication, which is geometric communication, spatial communication, which is plane communication, and depth communication, which is a point communication (focal point). So therefore, given the model of the atom, each communication type of the atom represents a type of mathematical operation. For example, the atom in itself is equals, the nucleus is greater than or equal to a value, spin is lesser than or equal to a value, quarks are addition that is something equal to three, gluons are to the power of which is equal to a value, gravity is division, which equals a value, and the center is subtraction, which is equal to a value. Therefore, given gravities hypothesised "where" is circumference and "when" is the radius, appearing in an equation, equalling a "where is when (what)" (it accelerates) this may also be applied to the other forms of communication of the atom, for example a generalised gluon equation may look like:

$$\text{How} = (\text{Where}^{\text{when}} = \text{What})$$

$$\text{Communication} = (\text{Recognition}^{\text{Perception}} = \text{Sense})$$

$$\text{Space and time} = (\text{Space}^{\text{Time}} = \text{Space is time})$$

And for gravity:

$$\text{How} = \left(\frac{\text{Where}}{\text{When}} = \text{What} \right)$$

$$\text{Communication} = \left(\frac{\text{Recognition}}{\text{Perception}} = \text{Sense} \right)$$

$$\text{Space and time} = \left(\frac{\text{Space}}{\text{Time}} = \text{Space is time} \right)$$

$$\left(\frac{\text{Circumference space}}{\text{Radius time}} = \text{Accelerating space is accelerating time} \right) \\ = \text{Gravitational communication}$$

$$\left(\frac{\text{Circumference space}}{\text{Misradius time}} = \text{Accelerating space is decelerating time} \right) \\ = \text{Gravitational uncommunication}$$

$$\left(\frac{\text{Miscircumference space}}{\text{Misradius time}} = \text{Decelerating space is decelerating time} \right) \\ = \text{Gravitational miscommunication}$$

$$\left(\frac{\text{Fluid circumference space}}{\text{Fluid radius time}} = F \text{ acceleration space is } F \text{ acceleration time} \right) \\ = \text{Gravitational fluid communication}$$

$$\left(\frac{\text{Noncircumference space}}{\text{Nonradius time}} = \text{Nonacceleration space is nonacceleration time} \right) \\ = \text{Gravitational noncommunication}$$

There may even exist more questions, being the who (can it be identified and does it have a subjective identity, for example, it's been identified as a quark), the why (information), and the way (the direction), but for now it is uncertain if that is the case, for example the gravitational equation may look like.

$$\text{A why in space is how in time} = \text{Where in space} \div \text{when in time} \\ = \text{what in space is who in time} = \text{the way in space is the way in time}$$

$$\text{Gravitational information space is gravitational communication time} \\ = \text{Recognising circumference space} \div \text{Perceiving radius time} \\ = \text{Sensing acceleration space is identifying accelerating time} \\ = \text{the way of inward space is travelling forwards time}$$

$$\text{Gravitational misinformation space and gravitational miscommunication time} \\ = \text{Misrecognising miscircumference space} \\ \div \text{Misperceiving misradius time} \\ = \text{Missensing deceleration space is misidentifying deceleration time} \\ = \text{The way of outward space is travelling backwards in time}$$

Therefore there are four questions of space and four questions of time, if it is the case if there are more questions. Therefore, if everything is quantum, which is false, what would a quantum gravitational system be? It is suggested in the equation below:

$$\text{False information space and true communication time} \\ = \text{True recognition space} \div \text{Falsely perceiving time} \\ = \text{False sensing space is true identifying time} \\ = \text{The true way in space is the false way in time}$$

$$\text{False gravitational space and true gravitational time} \\ = \text{True circumference space} \div \text{False radius time} \\ = \text{False acceleration space is true acceleration time} \\ = \text{True inward space is falsely travelling forward in time}$$

Therefore if equating the acceleration of a particle due to gravity

*True zero circumference ÷ True zero radius
= Falsely undefined nonacceleration space is falsely undefined nonaccelerating time*

*False zero circumference ÷ false zero radius
= True undefined nonacceleration space is true undefined nonacceleration time*

And for quarks:

How = (Where + When = What)

Communication = (Recognition + Perception = Sense)

Space and time = (Space + Time = Space is time)

One up space + Two down time = Three in space is three in time

And for the center:

How = (Where – When = What)

Communication = (Recognition – Perception = Sense)

Space and time = (Space – Time = Space is time)

And for spin:

How = (Where ≤ When = What)

Communication = (Recognition < Perception = Sense)

Space and time = (Space ≤ Time = Space is time)

And for the nucleus:

How = (Where > When = What)

Communication = (Recognition > Perception = Sense)

Space and time = (Space > Time = Space is time)

Neutron space ≥ Proton time = Stability space is stability time

And for the atom:

How = ((Where = When) = What)

Communication = ((Recognition = Perception) = Sense)

Space and time = ((Space = Time) = Space is time)

For objective reality:

Denial space + Delusion time = Space isn't real and so is time

Acceptance space + Illusion time = Real space is real time

For sight:

*Sight space and sight time = Eye space + peripheral time = Seeing space is seeing time
= Looking forward in space is looking forward in time*

For everything:

Space is false + Time is true = True in space is false in time

Space is true + Time is false = False in space is true in time

A truly false space + a falsely true time = A falsely true space is truly false time

A falsely true space + a truly false time = A truly false space is falsely true time

Paradoxical space + Nonparadoxical time = Nonparadoxical space is paradoxical time

Nonparadoxical space + Paradoxical time = Paradoxical space is nonparadoxical time

Space is nothing + Time is something = Something space is nothing time

Space is something + Time is nothing = Nothing space is something time

Known space + Unknown time = Unknown space is known time

Unknown space + Known time = Known space is unknown time

What can't be known can be known, what can be known can't be known

What decision state am i in? Unless observed, your guess is false, and therefore true

The answer depends on nothings something too

To know what's truly oriented up, is to know it's falsely oriented down

The false brain, a place where paradoxes abound

Recognition space + Perception time = Sensing space is identifying time

Where in space + When in time = When in space is where in time

The space beyond something + The time beyond nothing

= The space beyond nothing is the time beyond something

The space beyond nothing + The time beyond something

= The space beyond something is the time beyond nothing

The space beyond something is the time beyond nothing

+ The space beyond nothing is the time beyond something

= The false generation, a true anything

And so everyspace + Everytime = Any space is any time

Entangled space + Entangled time = Spacetime entanglement is generation nine

Superposition space + Superposition time = Spacetime superposition is generation nine

One state is false, the other state is false

The both state is false and the neither state is false

The all possible states, false

Therefore the impossible state, false

As the impossible state is a possible state

Just like those who memorise every calendar date

Everything is false, and so therefore true

Everything depends on what you choose

Every generation, the false generation, every generation, the true generation

It's all false speculation

Decision space + Decision time = Decision states deliver spacetime lines

Universal space + Universal time = The universal spacetime rhyme

False

It may be the case that spacetime is already quantum. For example a particle is the position of spacetime, a string is the distance of spacetime, a wave is the area of spacetime, and a field is the volume of spacetime. The next question to ask, what is mis-subtraction, mis-to the power of, mis-division, and mis-addition, that being negatives, as a mis-decision (not necessarily the wrong decision) are negatives, revealing an answer that isn't what it seems, unless it's mis-mathematical. Given these equations, there are questions that arise from mathematics being the communication of chemicals (and for every other brain area), and that is the general area itself, as every lower form of communication stems from a general area, that being, how is it a general chemical, what is a general chemical, when is it a general chemical, and where is it a general chemical? As the general area of communication is the combination of all communication areas that stem from that general area of communication, such that a general chemical "what" is the combination of all "what" of the sub areas of a general chemical communication, does there exist a general formula that combines all areas of generalised mathematical communication, a general chemical formula? A general mathematical formula? What is the generalised mathematical communication model?

Conclusion

To imply that there will ever be a complete model of the universe is false, so therefore the model will forever remain incomplete, which is false. A complete paradox, an incomplete paradox, a complete non-paradox, and an incomplete non-paradox? Incompletely complete? Completely incomplete? A paradoxically non-paradoxical paradox? A non-paradoxically paradoxical non-paradox? The universe, the false brain, everything, beyond nothing, or beyond something? All that stems from everything is a biosystem, and while the model of the absolute brain and all that sits under its hierarchy isn't a model of the false brain, the universe, it does include the universe (or does it exclude it?). Is the universe a biosystem? False. The impossible biosystem is a possible biosystem. The chemical equations introduced for the atom in this paper may be false, which doesn't then therefore make it true, so therefore there may still exist a generalised spacetime mathematical model for the atom and sub areas, just not what is shown in this paper.

There are decision states associated with every layer of the bio-model hierarchy, whether it's a non-decision, a mis-decision, a decision, and a fluid decision. Communication and its variants, that being non-communication, mis-communication, fluid-communication, and communicating mis-communication (or mis-communicating communication, which one is it?), are fundamental (including decisions), and when applying the four question spacetime bio-model to each area, has the potential to explain what you want to explain.

Everything is false, but even the notion that everything is false, is false. Impossibly false is possibly false. Therefore, everything is a false conclusion, which is false.

References

1. N Oshita, J Yokoyama. Creation of an inflationary universe out of a black hole. *Physics Letters B*: 2018; 785: 197-200. <https://doi.org/10.1016/j.physletb.2018.08.018>

2. L Boyle, K Finn, N Turok. CPT-Symmetric Universe. 2018; *arXiv*: 1803.08928. doi: <https://doi.org/10.48550/arXiv.1803.08928>
3. P Steinhardt, N Turok. A Cyclic Model of the Universe. 2002; *arXiv*: arXiv:hep-th/0111030. doi: <https://doi.org/10.48550/arXiv.hep-th/0111030>